

Data Reimagined

Tableau KPI Dashboard Sample

May 2019

The Sample Dashboard

This dashboard was developed as part of a broader project that involved an in-depth financial analysis and restructuring of the Clinic's operating framework. Quite a few dashboards were developed for individual departments so that they could keep track of their performance over time. The dashboard was developed for units that encountered patients who were being seen for drug overdose because one of the objectives of the overhaul was to determine which units, if any, had operating margins that required improvement. These were some of the requirements for creating this dashboard:

- Data had to be extracted from hospital financial records and patient visit records
- The dashboard had to be accessible by users in each unit and each user had to be familiar with its operation and how to extract information from it
- In order to generate the unit cost per encounter, a consistent accounting method was introduced so that operating costs, medical supply costs and medical equipment costs could be captured centrally for all units
- The dashboard was intended to show which units were most profitable—both relative to cost per encounter and to the number of encounters
- From the dashboard, users in each unit could navigate to pages that gave detailed information on the unit's operation
- The dashboard had to automatically update across all benchmarks as new data was input.

[Contact us for more information about our dashboards](#)

Quarterly Drug Overdose Encounters and Operating Metrics

These figures are benchmarks of the average by-quarter costs, charges, profit and operating margins for units that have drug overdose encounters

Units Ranked by Average Charge and Profit

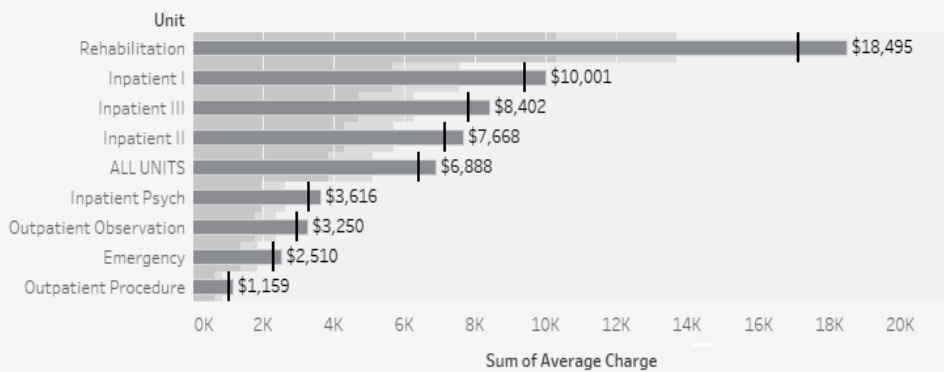


Total Encounters All Units Fourth Quarter 2017: 909

Operating Benchmarks by Unit

Unit	Average C..	Average C..	Operating Margin	Sum of Profit
Outpatient Procedure	\$1,045	\$1,159	9.8%	\$114
Inpatient Psych	\$3,276	\$3,616	9.4%	\$340
Outpatient Observation	\$2,945	\$3,250	9.4%	\$305
Emergency	\$2,310	\$2,510	8.0%	\$200
Rehabilitation	\$17,123	\$18,495	7.4%	\$1,372
ALL UNITS	\$6,382	\$6,888	7.3%	\$506
Inpatient II	\$7,122	\$7,668	7.1%	\$546
Inpatient III	\$7,823	\$8,402	6.9%	\$579
Inpatient I	\$9,412	\$10,001	5.9%	\$589

Encounter Average Cost Versus Average Charge



Encounters by Unit

Unit	Year / Quarter 2017			
	1	2	3	4
Total Encounters	1130	956	822	909
Emergency	631	592	438	595
Inpatient II	113	91	75	88
Rehabilitation	92	81	101	53
Outpatient Procedure	70	62	77	40
Outpatient Observation	109	25	47	24
Inpatient III	55	54	42	46
Inpatient I	68	44	37	43
Inpatient Psych				